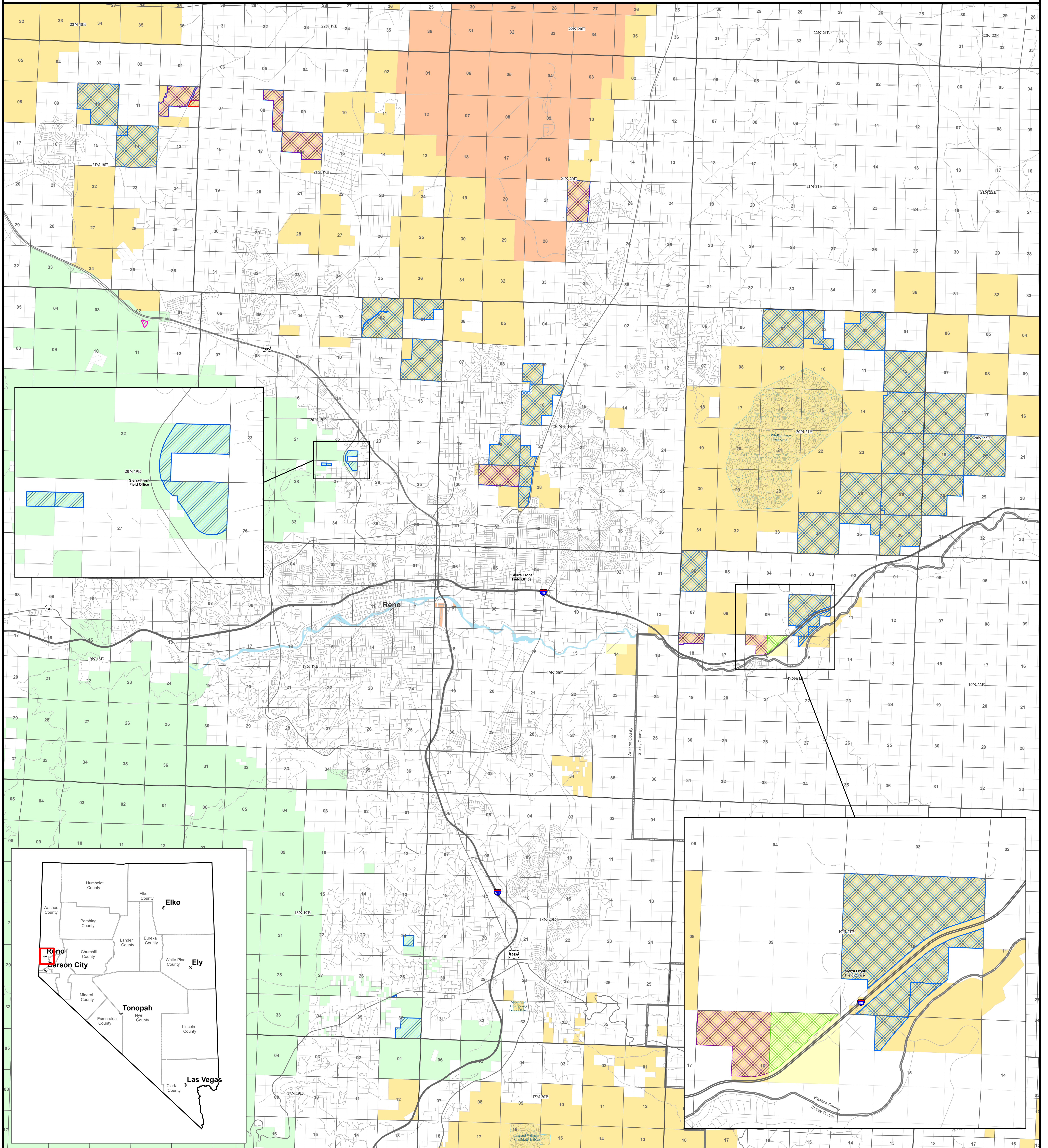


Truckee Meadows Public Lands Management Act – Land Disposals

December 6, 2024

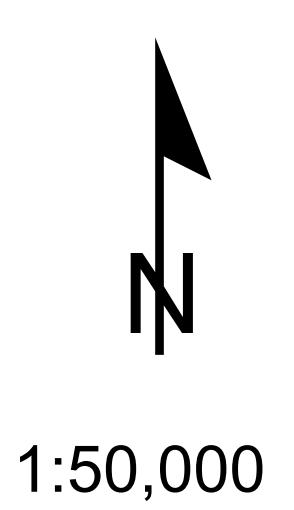
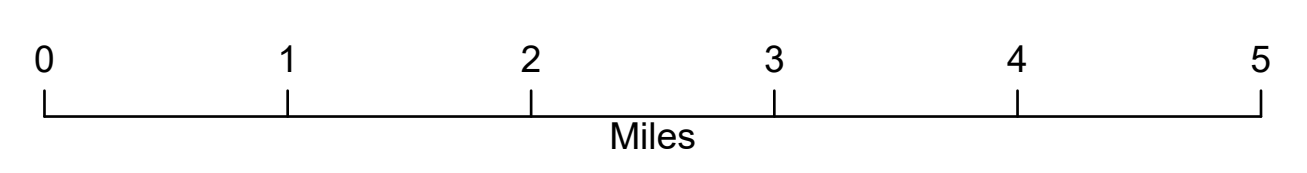
This map prepared at the request of Senator Jacky Rosen



No warranty is made by the Bureau of Land Management as to the accuracy, reliability, or completeness of these data for individual use or aggregate use with other data.
This map is intended to be plotted at 36 x 48 inches

- BLM Land for Disposal
- Additional BLM Land Potentially Available for Disposal
- BLM Land for Disposal Only for Affordable Housing
- BOR Land for Disposal
- USFS Land for Disposal
- USFS Land for Disposal Only for Affordable Housing
- Area of Critical Environmental Concern

- BLM District
- County
- Township
- Section
- Bureau of Indian Affairs
- Bureau of Land Management
- Bureau of Reclamation
- Forest Service
- Private
- Water



1:50,000